

# Grace AT WORK



**LSS**  
of Northern California

## In this issue...

- Outpouring of response for disaster relief
- Regional news
- Community Engagement
- How the Reformation created modern social services
- How to support LSS

## In the News

Visit our website to read these stories about LSS of Northern California programs and services plus other news about homelessness.

[www.lssnorcal.org](http://www.lssnorcal.org)

KTVU: Bay Area Homeless

San Francisco Chronicle:  
Rural Homelessness on the Rise

Kaiser Health News:  
Hospitals Invest in Housing

KCBS/Good Day  
Sacramento: Homeless  
Residents Stage Art Show

## Outpouring of Support for Disaster Relief

This has been an unprecedented year for natural disasters in the United States and in California with devastating wildfires throughout the state, especially here in Northern California. Your support for those affected by these disasters has been unprecedented, too.

Your gifts to disaster relief totaled more than \$20,000 between August and October, with thousands more promised from individuals and congregations. All funds will support short-and long-term disaster recovery needs through LCMS and ELCA efforts.

For immediate support, your gifts allowed us to provide \$18,000 in VISA gift cards to those directly impacted by the fires, especially low- and middle-income individuals with very limited resources. Wells Fargo Bank provided the cards and waived the service fee, so 100% of funds donated supported those who needed a helping hand as they rebuild their lives.



*Our nation and state have experienced many devastating disasters in the past few months, but we will overcome these trying times by supporting one another.*

## Rural Homelessness on the Rise

### *LSS Exploring Program Expansion in Shasta County*

Earlier this year, the federal government released its biennial counts of homeless throughout the nation. The rise in homeless adults, youth and families in rural areas startled everyone, especially in California. (Visit [www.lssnorcal.org](http://www.lssnorcal.org) to read the full set of news stories and findings.)

Redding, a bustling city of 88,000 people, is the county seat of Shasta County, which experienced a 25% increase in homelessness in the past two years. Congregations and community leaders there want to address the needs of this growing homeless population, so they contacted LSS of Northern California to explore how our supportive housing services can be established there. We are currently seeking funds to hire a staff person who can develop partnerships and assess needs in the region.

## MESSAGE FROM THE CEO

Dear Friends,

The outpouring of support for our neighbors near and far who have been affected by disasters has been strong and heartfelt, and it is a reminder of how Lutheran social ministries began.

October 31st marked the 500th anniversary of the Reformation. Luther set out to reform the Roman Catholic Church in 1517, but his focus wasn't just on the church. He also created a new approach to service and charity. At the time, the Pope and certain bishops insisted that believers needed to make gifts or purchase special dispensations – indulgences – to secure their salvation. Luther argued that because we are saved by grace, in gratitude, we are free to serve others.

Luther worked with the Wittenberg Council to establish the Common Chest to assist orphans, women and children; pay for education and vocational training; and provide medical services. The idea created the framework for modern social services, and focused on giving a helping hand-up. Today there are more than 300 Lutheran Social Service organizations across the country that touch the lives of one in 40 Americans each year.

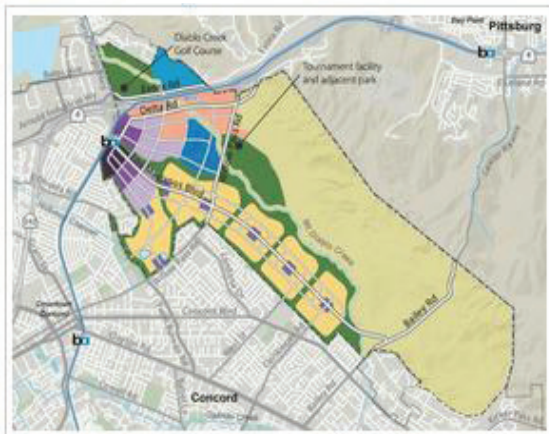
LSS of Northern California is *your* social ministry. Our call is to end homelessness by addressing the underlying causes, which include placement in foster care, poverty, chronic illness, mental health issues, unemployment, substance abuse and disasters. We provide stable housing and compassionate guidance that assists more than 3,500 formerly homeless adults, former foster youth and families in their journey to self-sufficiency and becoming engaged, productive members of their communities.

Thank you for all you do to help us end homelessness and to make this world a better place for everyone.

*Carol Roberts, Ph.D.*  
*President and CEO*



## ***LSS Northern California provides advice for the Concord Community Reuse Project***



LSS is part of a cohort of supportive housing non-profits (Satellite Housing, Eden Housing, Mercy Housing and MidPen Housing) that provide expert advice to the city and its developer of the Concord Reuse Project. Located on the site of the former Concord Naval Weapons Station, the massive 5,000 acre Concord Reuse Project will eventually include a mixed-use community with housing, commercial office buildings, retail, parks and open space and a new K-8 school. The City of Concord wants to insure this new community will reflect the needs of people of different ages, ethnicity, social and cultural backgrounds, income groups, the homeless, and people with disabilities.

To learn more, visit <http://www.concordreuseproject.org/>

## **Regional Updates**

### ***What's Happening in our San Francisco Programs***

We are delighted to announce a new partnership with **Lutheran Care for the Aging (LCA)**, a nonprofit established by LCMS members in 1959 to provide support for low income seniors in San Francisco. LCA offers information about services for seniors, limited emergency financial assistance for housing needs and temporary rental subsidies for low-income adults over age 65. With annual grant support from the LCA endowment LSS will take over management of this amazing program in January 2018. The program will be housed at LSS offices at 191 Golden Gate Ave.

Our **Forensic Housing Program** at the Kinney Hotel in the Tenderloin is partnering with PRC (Positive Resource Center) and Larkin Street Services on a three-year pilot program to assist formerly homeless HIV positive youth in obtaining adequate healthcare and vocational services that will help them remain housed and employed. Funding for this grant comes from the federal Human Resources and Services Administration's Special Project of National Significance.

Generous grants from **St. Mark's Endowment Committee** and the **ELCA Domestic Hunger Program** will support nutrition education and critical emergency food support for residents in the **Forensic Housing Program (FHP)** and the **Stabilization Housing Program (SHP)**, both housed at the Kinney Hotel in the Tenderloin. FHP serves HIV positive adults recently released from incarceration by offering short-term housing and case management as residents work to re-enter the community and become self-sufficient. SHP offers very short term (28 days per year) respite housing and case management for homeless, medically fragile HIV positive adults.

*Nancy Nielsen, Deputy Director, San Francisco 415.581.0891*

***Regional Updates continued on Page 4***



## How Can You Help Us End Homelessness for Good?

We hope you will consider LSS of Northern California in your end-of-year charitable giving. Here are some of the ways you can partner with us to end homelessness – for good.

**Cash or Check** (*made out to LSS of Northern California*)

**Credit Card** (*online or call us*)

**Partner for Good** (*ongoing monthly donation made with a credit card spreads your gift over 12 months and renews automatically each year*)

### Donate Appreciated Stock

Avoid capital gains on appreciated stocks by donating them to LSS in lieu of cash. Simply have your broker call us to obtain a copy of the routing slip with Fidelity to arrange for the transfer. We liquidate the stocks immediately and send you an acknowledgement for your records.

### Over age 70? Consider Making a Gift from Your IRA

You may be able up to donate up to \$100,000 per year in IRA assets to a qualified charitable organization such as LSS of Northern California. The IRA charitable rollover is tax-free and not included in a donor's adjusted gross income, plus it allows you to take your required minimum deduction (RMD). Contact your financial advisor for more information to see if you qualify.

### United Way/Community Support Campaigns

If your employer participates in such a program, please consider LSS of Northern California as a beneficiary of your annual gift.

## Employer Matching Program

Many employers sponsor matching gift programs and will match any charitable contributions made by their employees. Check with your Human Resources department for details and how to request a matching gift. Your gift to LSS of Northern California may be doubled or possibly tripled! Some companies match gifts made by retirees and/or spouses as well.

*For more information about any of these options visit our website, [www.lssnorcal.org](http://www.lssnorcal.org), or contact our Development team at 925.825.1060: Stephanie Casenza, x15; Rachel Flores, x20, or Megan Kuneli, x10 or send an email to [Development@lssnorcal.org](mailto:Development@lssnorcal.org)*

## Regional Updates (continued from page 3)

### What's Up with our Sacramento Programs

An **art show** organized by residents at our supportive housing program at Mutual Housing at the Highlands attracted coverage from three local television stations (Good Day Sacramento, CBS 13 and Fox 40) in late October. The Creative Expressions art show featured 40+ original acrylics, oils, ceramics, crafts and poems.

**Jason Sitar** of our **Fostering Future Success** youth program joined other experts in addressing shared housing options for foster youth transitioning out of care at the Northern California Homelessness Roundtable in August.

The **Saybrook** site also welcomed the Art Beast Child Development Center as its new child daycare provider. Art Beast focuses on creative exploration.

*Kate Hutchinson, Deputy Regional Director,  
Sacramento 916.453.2900*

## Community Engagement Makes a Difference

*Congregations and business associations throughout the region partner with LSS in many ways to assist our residents in their journey to self-sufficiency and becoming engaged, productive members of the community.*

### **Home Sweet Home baskets**

We are grateful to these congregations for helping our residents make their house into a home.

- Shepherd of the Hills, Berkeley
- Faith Lutheran, Pleasant Hill
- Holy Cross Lutheran, Concord

### **Holiday Gift Drives**

These congregations will make the Christmas holidays a little brighter for more than 200 youth, children and families in our Sacramento, Stockton and Concord supportive housing programs by granting ‘wishes.’

- Church of the Resurrection Lutheran, Granite Bay
- Holy Cross Lutheran, Concord
- Trinity Lutheran, Sacramento
- St. Marks Lutheran, San Francisco

### **Community Service**

More than 12 volunteers from the **Sacramento Hotel Association** helped with landscaping the new day care playground at Saybrook apartments.

College students from UC Davis and Sacramento State University painted the offices at Saybrook apartments through the Day of Caring sponsored by **United Way of California Capital Region**.

Volunteers from **St. Mark’s Lutheran in San Francisco** gave our offices at 191 Golden Gate a much-needed coat of paint in the reception area and cleaned up sidewalks around the building.

**Zion Lutheran in San Francisco** donated school supplies to children living at our program in the Mosaica building in the Mission district.

**Lutheran Church of the Resurrection in Granite Bay** organized an ice cream social for the 55 formerly homeless families at Saybrook apartments.

### 2017-18 Class of LEVNs and AmeriCorps



Our Sacramento region welcomed new members of Americorps Vista and Lutheran Episcopalian Volunteer Network members. They will stay with us until summer 2018 and work with youth in our transitional housing programs. Their duties include teaching classes in recycling, cooking and ready-to-rent skills for when they move into permanent housing.

LEVNs are college graduates between 21 and 30 years old who are drawn toward service, justice and living in intentional Christian community. AmeriCorps creates jobs and provides pathways to opportunity for young people entering the workforce, helping them learn valuable work skills and develop an appreciation for citizenship.

*Pictured from left to right are Zach Kihm, Sara Nakasone, Andrea Merkey, and Nicolette McHugh*



1465 Civic Court  
 Building D, Suite 810  
 Concord, CA 94520

Non-Profit Org.  
 U.S. Postage  
 PAID  
 Permit No. 476  
 Concord, CA

**MAIN OFFICE**

1465 Civic Court  
 Building D, Suite 810  
 Concord, CA 94520  
 Tel 925.825.1060  
 Fax 925.825.1061

**SERVICE OFFICES**

191 Golden Gate Avenue  
 San Francisco, CA 94102  
 Tel 415.581.0891  
 Fax 415.581.0899

4390 47th Avenue  
 Sacramento, CA 95824  
 Tel 916.453.2900  
 Fax 916.453.2904

8161 Palisades Drive #233  
 Stockton, CA 95210  
 Tel 209.323.5131  
 Fax 209.954.1715

**BOARD OF DIRECTORS**

- Chrislyn Carson, Chair
- Brion R. Beetz
- Becky Burad
- V-Anne Chernock
- Elizabeth Donnelly
- Jeffery Patrick Douglass
- Yolanda Gan
- Jayde Garcia
- Sandra Hamilton Slane
- Joan Hilse
- Tom Hurley
- Patricia Leslie
- Joel Mjolsness
- Chris D. Nicolette
- Crystle Wong
- John Yeh

**PRESIDENT/CEO**

Carol Roberts, Ph.D.

Our mission is to offer dignity and stability to our communities by providing supportive housing services that lead to self-sufficiency.

Our vision is that our communities have hope, stability, and a path to self-sufficiency.



**Welcome to New Board Members**



Brion R. Beetz, left, of Pinole and Sandra Hamilton Slane of Redding join the LSS Board of Directors in December. These two highly qualified individuals replace members whose terms of service have ended: Joan Hilse and Joel Mjolsness. We will miss Joan and Joel and deeply appreciate their wonderful work to advance our mission to end homelessness – for good.